

**MARLOW
FILM
STUDIOS**

LIGHTS CAMERA ACTION

**A NEW HOME
FOR BUCKINGHAMSHIRE'S
BEST CREATIVES**



**SCAN TO FIND OUT
HOW TO SUPPORT**



MARLOW FILM STUDIOS: WHAT IS BEING PROPOSED?

A new **state-of-the-art film studio** and filmmaking campus in Buckinghamshire.

The proposals will turn a former landfill and quarry site into a top tier creative workspace, providing a major centre for British filmmaking. In doing so, this will bring with it international recognition, contributing **£350 million** to the local economy annually, and generating up to new **4,180 jobs** anchored in Buckinghamshire – 2,000 directly at the studio and another 2,000 in the wider supply chain.

The new studio will also provide traineeships and educational opportunities for local young people helping deliver a pipeline of



Buckinghamshire talent into the industry.

The outstanding architectural design, together with the design of the buildings, the energy strategy, the role of landscape and

biodiversity all as integral elements of the masterplan, will enable award-winning film and television production that is sensitive to climate impacts and benefit the local communities in Buckinghamshire.

DID YOU KNOW?

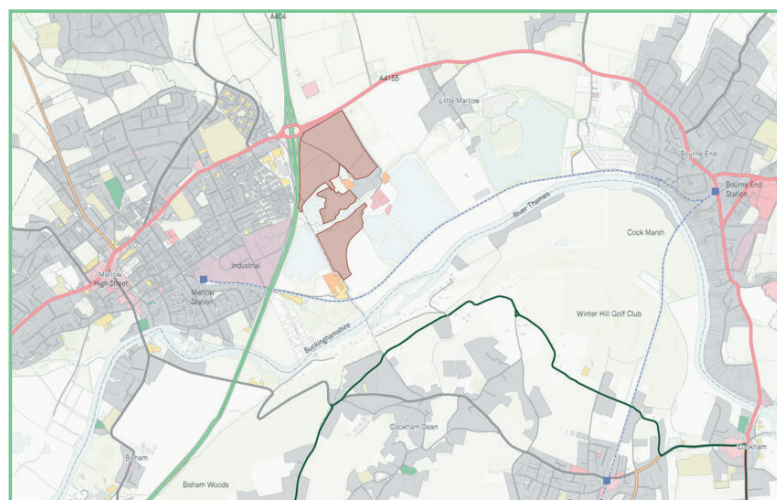
The UK is the top global destination for high budget film and TV, but despite this, only captures around 5% of the available investment.

WHERE IS THE MARLOW FILM STUDIOS SITE?

The proposals for Marlow Film Studios are in the South Buckinghamshire parish of Little Marlow, east of the A404 dual

and the town of Marlow. Little Marlow and Bourne End are located to the east with High Wycombe four miles to the north.

up to two blockbuster productions simultaneously.



carriageway and south of the A4155. To the west of the site is Globe Business Park

The proposal is to build a modern best in-class film studio, capable of hosting

The 89 acre site brings one of the area's largest historic landfills – containing around 300 Olympic swimming pools of landfill waste – regenerating underutilised poor quality land within easy access of the film industry cluster in the region (Pinewood, National Film and Television School, etc) and the travel hubs of London and Heathrow.

A quarter of the site will be for recreation and wildlife, available to the neighbouring communities, in addition to education and community buildings, such as the Culture and Skills Academy. According to Knight Frank film production floor space will have to double by 2025 to keep up with the level of content being produced and Marlow Film Studios will help meet current industry demand, while ensuring that Buckinghamshire remains at the heart of UK film production.

Approximately 5-10 major productions were lost between 2016 and 2018 due to lack of suitable studio space, equivalent to a loss of £950 million, the new studio will ensure Buckinghamshire and the industry receive this investment.

WHO WILL BENEFIT FROM THE PROPOSALS?

Marlow Film Studios will have immense benefits for a wide range of individuals across Buckinghamshire, including:

- **Children across Bucks** will benefit from the best-in-class education and skills programme, with local education partners, such as Bucks New University and industry bodies including ScreenSkills, featuring yearly traineeships, school trips, lectures and more.
- **Film and television professionals** are set to benefit from the creation of an estimated 2,000 new onsite jobs. Buckinghamshire already has a proportionally large crew base who are essential to training and passing on very special industry skills. According to the British Film Commission (BFC) Stage Space Support and Development analysis, over 13% of globally significant London and the Home Counties freelance film and HETV crew live within 30 minutes of the studio. By creating a much-needed new studio space in Buckinghamshire the proposals will benefit industry professionals allowing them to have a healthy work-life balance, for their children to have stability in schools, and their commute to be short and via sustainable transport methods.
- **Commuters living in High Wycombe, Marlow and surrounding areas.** The studios will establish two entirely new public bus routes in the area, including a new service from High Wycombe to Maidenhead, connecting commuters to the new Elizabeth Line services. A new local hopper service linking Marlow, Little Marlow, and Bourne End will also be introduced as part of our plans to aid local transport opportunities for residents.
- **Business owners** across Bucks will benefit from the increased investment in the region. More than two thirds (67%) of film production budgets are spent in the wider economy in sectors not directly related to screen trade, such as tourism, hospitality and construction, meaning that even businesses not directly related to the industry will benefit from the studios investment.
- **Local residents.** A quarter of the studio site will be for enhanced wildlife habitats and recreation for locals to enjoy the area which is currently private land.
- **University students** studying degrees related to the television and film industry will greatly benefit the Culture and Skills Academy, with lectures set to be hosted at the studio, as well as the opportunity apply for traineeships and jobs upon graduation.

DID YOU KNOW?

Between 2015 and 2020, twice as many blockbusters were produced in Bucks than anywhere else in the world.

HOW TO SUPPORT?



Planning Reference: **22/06443/FULEA**

- 1 Visit www.marlow.film to sign up to our pro forma letter of support.
- 2 Upload a letter of support on Bucks Council's planning portal.
 - Visit the Wycombe Area planning portal for Buckinghamshire Council:
 - Select the "Comments" tab and log in
 - Select the type of commenter relevant to you – likely "Member of Public" or "Neighbour"
 - Select "Support" under "Stance"
 - Write your comment in the large box (max 5000 characters)
 - Press "Submit"
- 3 Email Bucks Council your support.
 - Include the subject "Support for Marlow Film Studios – Ref: 22/06443/FULEA". All letters must have the planning reference to be logged.
 - Include why you support the studios.
 - Email your comments to publicaccesscommen.wyc@buckinghamshire.gov.uk and copy in support@marlow.film
- 4 Email support@marlow.film with videos saying why you support for us to use on social media.
- 5 Follow and **reshare** our posts on **Facebook and Instagram**.
- 6 **Hang the poster up** overleaf in your window.